

# DocKeep Pro Integration with FileMaker Pro

## Introduction

DocKeep Pro can be quickly integrated into any FileMaker Pro solution.

It's as easy as 1-2-3. It should take about 5 minutes to image enable your FileMaker solution.

Acordex has provided an unprotected integration example called 'DocKeep Scan to Container'. It is intended for use with FileMaker 12. If you wish to integrate DocKeep into your own FileMaker 12 solution simply follow these steps:

- Step 1 - CREATE a new container field in your solution
- Step 2 - IMPORT the 'Scan' and 'Edit' scripts from the 'DocKeep Scan to Container' example
- Step 3 - LINK the scripts with that container field

The details of each step will be described below. You may want to become familiar with the example solution first and operate it with your Fujitsu scanner before you attempt to integrate DocKeep into your FileMaker solution.

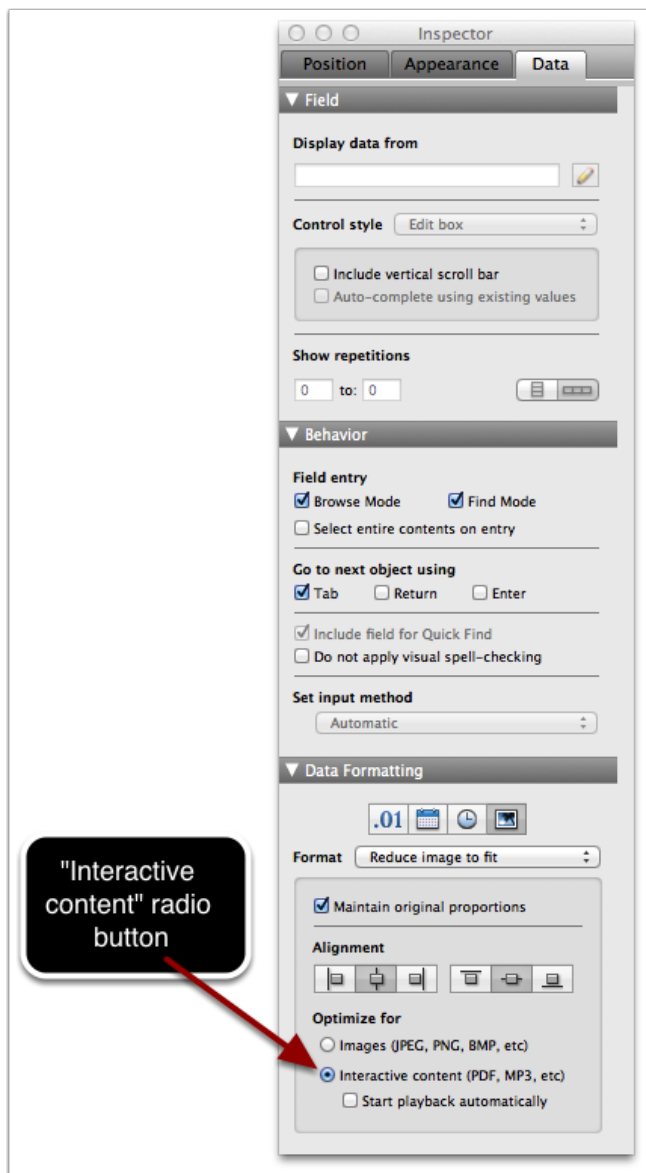
## Requirements

- You must be running Mac OS 10.6 or greater
- You must have installed FileMaker Pro 12, FileMaker Pro 12 Advanced
- You must be running DocKeep Pro Version 8 ([download 15-day trial](#))

## Step 1 - CREATE a container field for "Interactive content" in your FileMaker file.

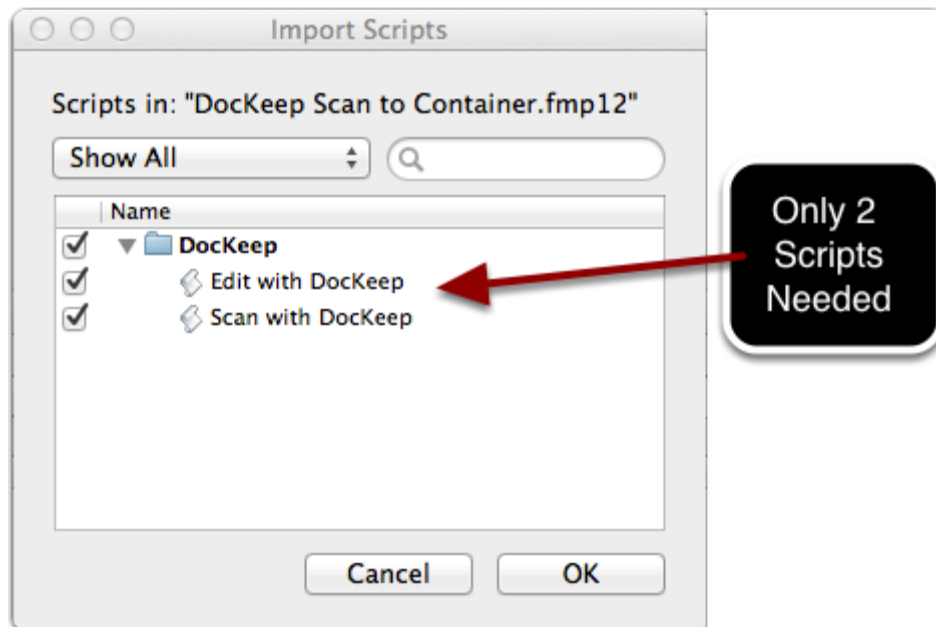
You will need to have at least one 'container' field in your solution that will be used to store the scanned images captured by DocKeep.

For the new container field, enter 'layout' mode and select the inspector tool's "Data" tab. Under the "Data Formatting" section select the "Interactive content . . ." radio button. That will allow you to view and scroll through all of the pages of the container while in 'browse' mode.



## Step 2 - IMPORT the 'DocKeep' scripts from the Acordex 'DocKeep Scan to Container' Solution

The scripts to be imported are located in a scripts subfolder called "DocKeep". Import the 'Edit with DocKeep' and 'Scan with DocKeep' scripts into your solution.



## Step 3 - LINK the Imported Scripts to the Container Field in Your FileMaker Solution.

In order to link the scripts to your container field, you will need to modify both the 'Edit with DocKeep' script and the 'Scan with DocKeep' script.

Modify the 'Edit with DocKeep' script statements:

- "Go to Field . . ." use the name of your container field
- "Go to Layout . . ." use the name of the layout on which your container field resides
- "Export Field Contents . . ." use the name of your container field for the 'target field', and '\$DK\_ContainerExportFilePath' variable name for the 'Output File Path'

Modify the 'Scan with DocKeep' script statements:

- "Go to Field . . ." use the name of your container field
- "Go to Layout . . ." use the name of the layout on which your container field resides

You will essentially be rewiring those scripts to connect to the new container field in your solution as well as the corresponding layout on which the new container resides.

## Checklist Review

1. Add a container field into your FileMaker database
2. In layout mode, use the inspector to change the container format for "Interactive content"
3. Import the "DocKeep" scripts from the demonstration file
4. Link the imported DocKeep 'Edit with DocKeep' script to your container and layout
5. Link the imported DocKeep 'Scan with DocKeep' script to your container and layout

## For More Information Please contact Acordex

Acordex Imaging Systems  
37 Walker Road  
North Andover, MA 01845  
978-975-8000

[www.acordex.com](http://www.acordex.com)  
[www.dockeep.com](http://www.dockeep.com)

[info@acordex.com](mailto:info@acordex.com)